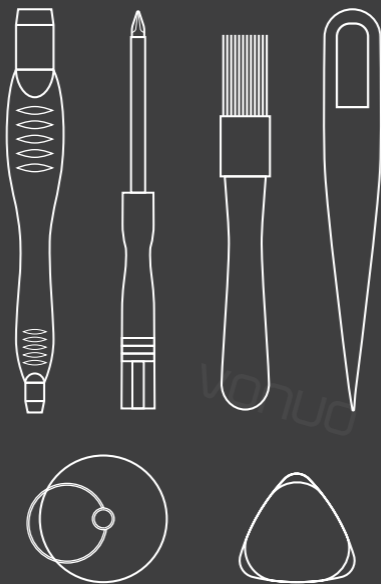


VONUO



Battery Replacement Guide

for iPhone 6 series

Our Promise of Quality:

VONUO premium Lithium Polymer batteries provide excellent continuous power for mobile phones. The multi protection system and unique memory metal fuse ensure safety and durability. Every battery is factory tested following the VONUO CQCG 6.3 (Certified Quality Control Guidelines). Precise sizes for perfect fit, efficient intelligent management chips and high-density polymer cores meet highest user expectations. Designed and all parameters specified in Germany.

Important:

Please refer to your phone manual before installing and using the replacement battery. DO NOT disassemble, cut, puncture or crush the battery. Keep the battery away from fire, heat, water, oil and corrosive chemicals. Follow applicable regulations when disposing.

Warning:

Upon opening your iPhone any product warranty granted by Apple® may expire.

Package Includes:

- 1 x Lithium Polymer Battery
- 1 x Battery Adhesive Strap
- 1 x Repair Tool Kit consisting of:
 - 1 x Plastic Spudger
 - 1 x Plastic Tweezers
 - 1 x Tri-Point Screwdriver
 - 1 x Phillips Screwdriver
 - 1 x Pentalobe Screwdriver
 - 1 x Suction Cup
 - 1 x Plectrum
 - 1 x Brush
- 1 x Battery Replacement Guide

Overview of the tools required for installation

1 x Plastic Spudger



1 x Plastic Tweezers



1 x Tri-Point Screwdriver



1 x Phillips Screwdriver



1 x Pentalobe Screwdriver



1 x Suction Cup



1 x Plectrum



1 x Brush

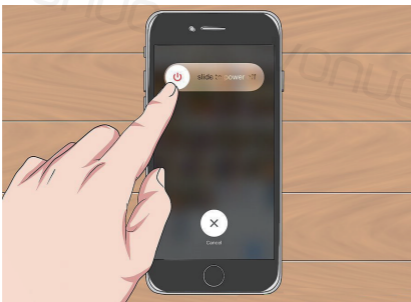


Important information about the installation

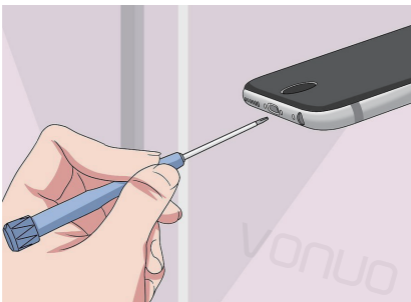
We advise you to install the battery in attendance of a professional if you are not completely comfortable with the handling of electronic devices. We do not recommend relying on a video tutorial. Most of the problems such as electrostatic charge occur due to incorrect installation.

VONUO is not liable for any problems caused by incorrect installation.

Installation



- 01** Make sure the iPhone is turned off. Make sure the iPhone is completely turned off, not just in Sleep mode. Press and hold the Power button, then swipe the slider to turn the iPhone off.



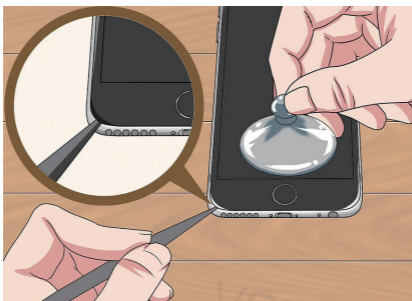
- 02** Remove the two Pentalobe screws on each side of the Lightning port. This is the charging port at the bottom of the iPhone. You'll need a Pentalobe screwdriver to remove them. The size varies slightly depending on the model:
6 and 6 Plus - 3.6 mm Pentalobe - 6s and 6s Plus - 3.4 mm Pentalobe



- 03** Place a suction cup on the front of the iPhone right above the Home button. You'll want a strong suction cup that can help you separate the display from the case. For the 6s and 6s Plus, place the suction cup in the lower left corner instead of directly above the Home Button.



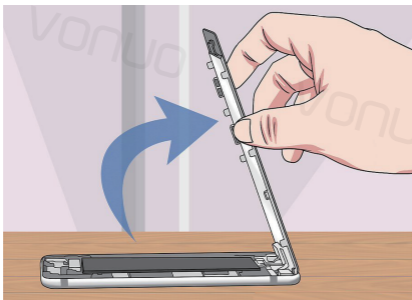
- 04** Pull up firmly on the suction cup to separate the display from the case. You just want to create a very small gap between the display and the rest of the shell. Pulling too hard can damage the display, so pull with a firm, constant force. Hold the rest of the iPhone down with your other hand while you pull the suction cup.



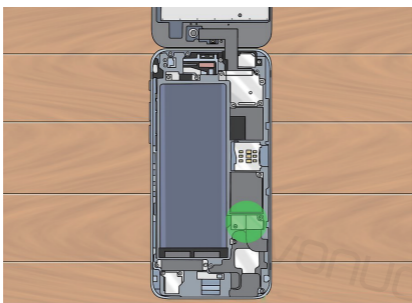
- 05** Use a plastic spudger to pry the case apart. A spudger is a tool with a flat end, much like a flat-blade screwdriver. Insert the spudger into the space created, and then gently work the display apart more. If you're opening the 6s or 6s Plus, insert the spudger into the notch that appears above the headphone jack. Twist the spudger to help pry the display up from the case.



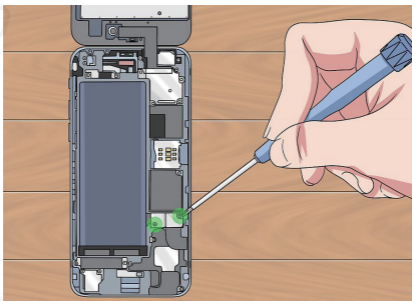
- 06** Move the spudger around the case (6s and 6s Plus). Sliding the spudger up the right and left sides of the case while gently twisting it will help pry up the screen.



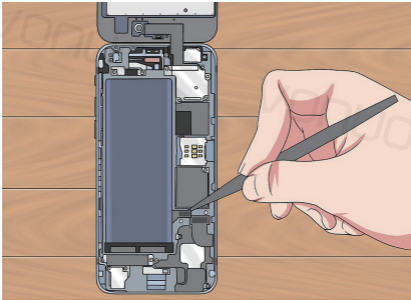
- 07** Swing the display up using the top as a hinge. Once you've pried the lower portion of the screen from the case, you can swing it up so that the screen is at a 90° angle from the case. You can prop it up on a book or box to keep it in place. Do not completely remove the screen, or you will damage the connectors, rendering the iPhone inoperable.



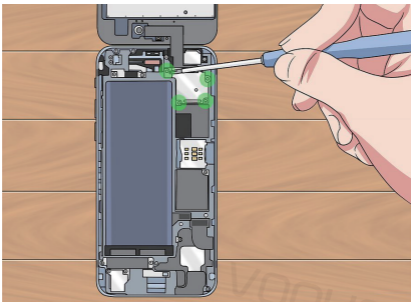
- 08** Find the battery connector bracket. If you're looking at the battery, the connector will be on the left side, about a third of the way from the bottom. The connector is covered by a rectangular piece of metal with two screws.



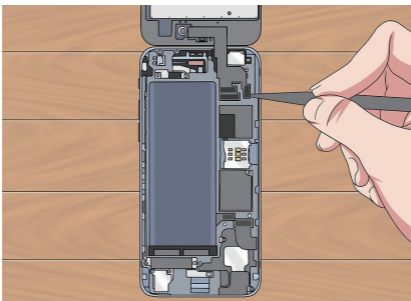
- 09** Remove the two screws holding the connector bracket. Use a small Phillips screwdriver to remove the two screws holding the bracket into place. You'll be able to lift the bracket out, revealing the connector.



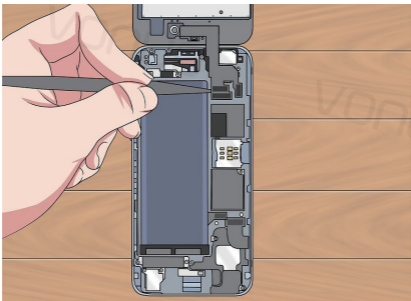
- 10** Pop the connector off of the logic board. Use your spudger to pop the end of the connector off of the logic board. Be careful when doing so, as removing the entire socket will break the iPhone.



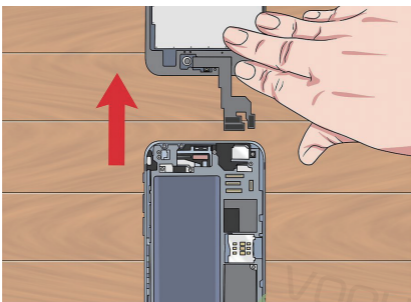
- 11** Remove the screws from the display cable bracket. This bracket can be found in the upper-right corner of the open iPhone. Take the screws out and remove the bracket. Make sure to pay attention to which screws went in which holes. The iPhone 6, 6 Plus, and 6s Plus have five screws to remove. The iPhone 6s has four.



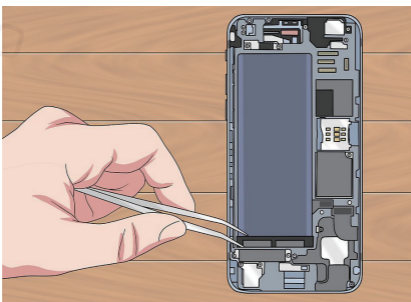
- 12** Disconnect the camera cable. This is the large connector at the bottom of the area you revealed when you removed the bracket, with a cable leading to the display. Use the spudger or your fingernail to gently pry the connector from the socket. Be careful not to remove the socket as well.



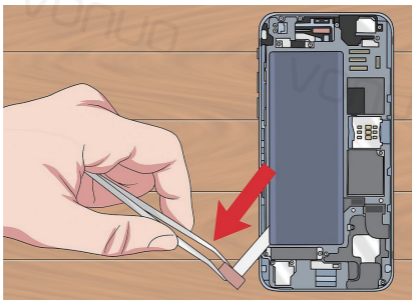
- 13** Remove the other connectors in the same area. There are three other connectors that need to be removed from the same area. One is directly next to the camera cable, and the other two are revealed when you disconnect the camera cable.



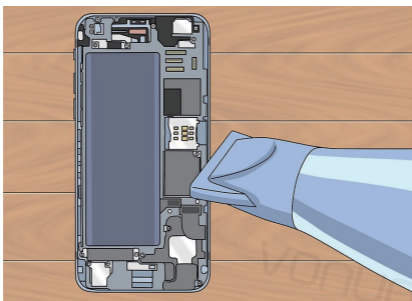
- 14** Separate the screen from the rest of the case. Once the connectors are all removed, you can separate the screen from the rest of the iPhone.



- 15** Use tweezers to peel the adhesive off the bottom of the battery. These adhesive strips help keep the battery in place. You'll find them along the bottom of the battery.



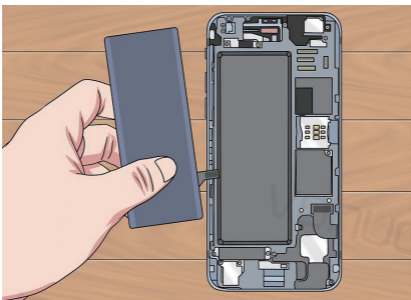
- 16** Gently pull the adhesive out and away from the battery. The adhesive runs along the other side of the battery. Pull it slowly out until you've completely removed it. One strip will go up the right side of the battery, and another will go up the left.



- 17** Heat the back of the iPhone with a hairdryer. Use a hairdryer and blow on the backing of the iPhone for about a minute. This will weaken the rest of the adhesive that is holding the battery in. Don't hold the hairdryer directly up against your phone or attempt this step on its hottest setting, as too much heat can cause your phone to sustain more damage.



- 18** Use a plastic card (like a credit card) to pry the battery out. After removing the adhesive strips, you'll need to use a firm plastic card to pry the battery off of the remaining adhesive. Stick the card in between the left edge of the battery and the side of the case, then gently pry it out. Make sure that you don't bend the battery while you're prying it, as this can release hazardous chemicals.



- 19** Replace your battery and reassemble your iPhone. Once your battery has been removed, you can replace it with a new one and put your iPhone back together. Make sure that all of your connectors are firmly reseated in the correct ports, and that you put the screws back in the same holes that they came out of.
- 20** Perform a hard reset after reassembling by pressing and holding the Home and Power Buttons until the Apple logo appears. For best battery performance, it's recommended that you drain the battery to below 10%, then charge it to 100%.

Well done, you've successfully installed your new VONUO battery!

If you are happy with your battery why not leaving a review for future customers?

VONUO

VONUO

FAQ's

Why does my mobilphone suddenly shut down right after the installation of the new battery?

The brand new battery in its original state has zero charging cycles. The battery is still in a sleep state. This means that the lithium ions are not activated, yet. In order to activate them all you got to do is to automatically let your phone shut down by itself, then put it on charge until fully charged. This may take up to 12 hours. Repeat this step 3 times and you are ready to go with full battery capacity. The phone should now run smoothly with maximum running time.

How to maintain the durability of the battery?

Do not expose the phone to temperatures over 30° and under 5 degrees. This may result in a power shortage and the consumption of the battery will increase. Using unlicensed charging devices may also result in a quicker discharge.

How to correctly charge your phone?

The first three charging cycles may take longer than usual. It is recommended to charge for more than 10 hours to completely activate the battery. After the first three charges the battery is sufficiently charged and only then the maximum capacity is reached.

Before I start, what else do I have to consider ?

We advice you to install the battery in attendance of a professional if you are not completely comfortable with the handling of electronic devices. We do not recommend relying on a video tutorial. Most of the problems such as electrostatic charge occur due to incorrect installation.

VONUO is not liable for any problems caused by incorrect installation

**For more information, please visit:
www.vonuo.com/support**

VONUO
MAKE MOBILE LIFE SIMPLE

Importer:

VONUO Europe

L.T. Solutions • Inh. Levent Dogan

Düsseldorfer Straße 71

51063 Cologne • Germany

+49 221 9724 605

www.vonuo.com



© 2018

All trademarks are the property of their respective owners.